

## RESULTS YOU CAN SEE

BEFORE

AFTER

### SWELLING AND REDNESS



Courtesy of B. Rümmelein, MD, Switzerland

### ROSACEA



Courtesy of B. Rümmelein, MD, Switzerland

### POST EXCORIATION WOUND TREATMENT



Courtesy of P. K. Min, MD, South Korea

### ANDROGENIC ALOPECIA



Courtesy of B. Rümmelein, MD, Switzerland

RESULTS MAY VARY.

## { ANSWERS TO YOUR questions }

### How comfortable is the treatment

Very. In fact, many patients find it relaxing.

### How long are the treatments

Relatively short, depending on your physicians treatment plan. Typical treatments last between 10 and 20 minutes.

### How long are the downtime?

There isn't any downtime from the standalone Healite II treatment. However, if Healite II treatment is an adjunctive treatment, there may be an associated downtime to your other procedure. Your physician will discuss this with you during your consultation.

### How many treatments will I need?

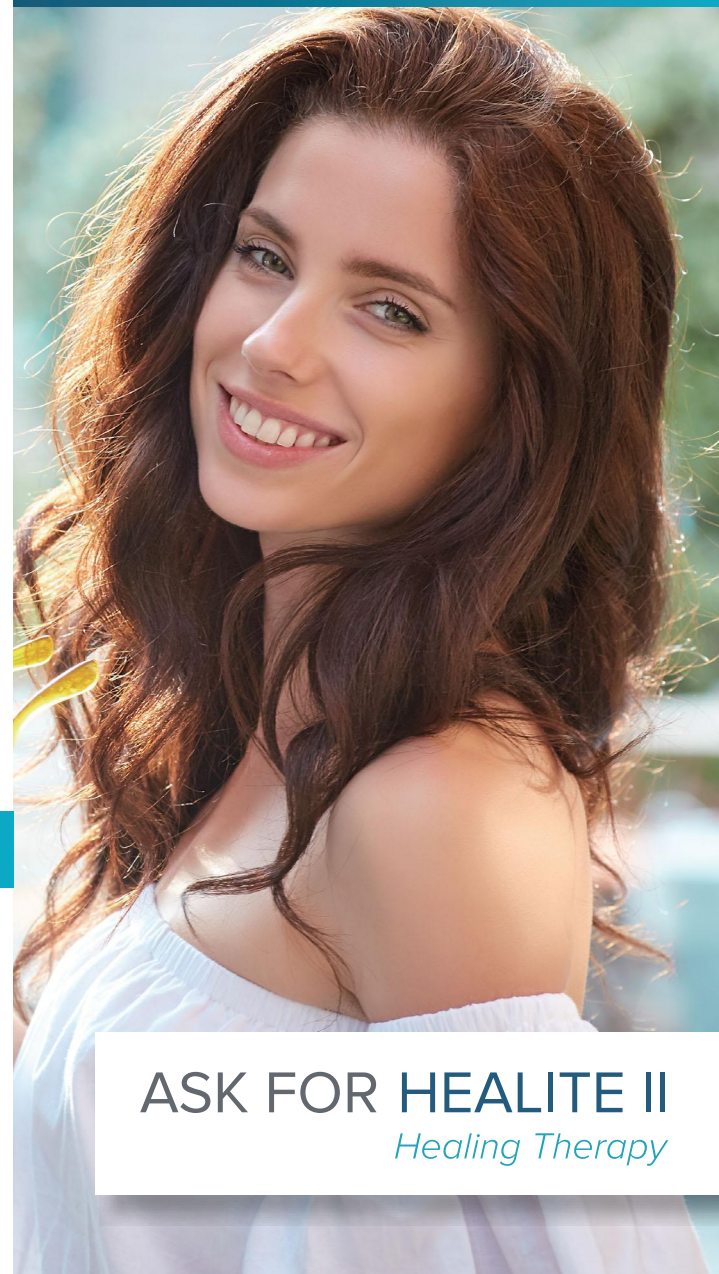
Your physician will discuss your treatment goals with you; these goals will determine the number of treatments you will need. Typically patients are treated 2 times a week over a period of time and many patients see and feel results after just one treatment.

SEE HEALITE II FOR YOURSELF!

**LUTRONIC**  
Intelligent Care

©2021 LUTRONIC. ALL RIGHTS RESERVED.  
LUTRONIC, Lutronic Intelligent Care, Lutronic Healite II, and associated logos are service marks, trademarks, and/or registered trademarks of Lutronic Corp. and/or its subsidiaries in the USA and/or other countries.  
2021 HealiteII-PABR-20210611

## DISCOVER WHAT LED'S CAN DO FOR YOU



ASK FOR HEALITE II  
*Healing Therapy*

# FASTER HEALING, PAIN MANAGEMENT & MORE

Low-level light therapy (LLLT) with Healite II is the therapeutic use of light emitting diode (LED) light to enhance your body's natural cellular recovery, improving healing times, relieving pain, subsiding active acne, promoting skin rejuvenation and more. The pain free and non-invasive treatment delivers concentrated energy deep into your tissue affecting your body at a cellular level.

Your physician can use Healite II as a standalone therapy or as an adjunctive enhancement of recovery with nearly any procedure.

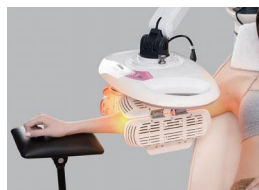
## LLLT is :

- Painless
- Non-invasive
- Risk-free
- Safe & effective for all skin types



## { HOW HEALITE II works }

The deep penetrating LED lights are soothing, they target deep into the skin cells to heighten their internal functions, photo-stimulate dermal blood flow and induce faster healing, decrease pain, reduce acne and more.



Adjustable head for large coverage or focused intensity; Flexible arm can adjust to your treatment area.

## Healing Time Comparison

(830 nm with 590 nm photosequencing)

TX/INDICATION	WITHOUT HEALITE II	WITH HEALITE II
After facial surgery	Up to 13 weeks	Up to 6 weeks (53% reduction)
Brusing	1 week	1-2 days (78% reduction)
Erythema	15 - 16 weeks	2 weeks (87% reduction)
Edema	5 days to 1 week	2 - 3 days (58% reduction)

## YOU CHOOSE

With three available treatment heads, there is one that is right for your treatment needs. Ask your doctor which Healite II wavelength is right for you.



830 nm with 590 nm photosequencing

- Wound Healing
- Pain Relief
- Muscle & Joint Pain
- Arthritis
- Hair Regrowth
- Skin Rejuvenation
- And More



633nm

- Non-melanoma Skin Cancer (Exogenous PDT with 5-ALA)
- Skin Rejuvenation
- Hair Regrowth



415nm

- Active Acne (Exogenous PDT)

## No Pain, No Downtime, No Side Effects

Whether you are looking to see enhanced recovery after your surgical or aesthetic procedure or as a stand alone treatment the Healite II will brighten your day.